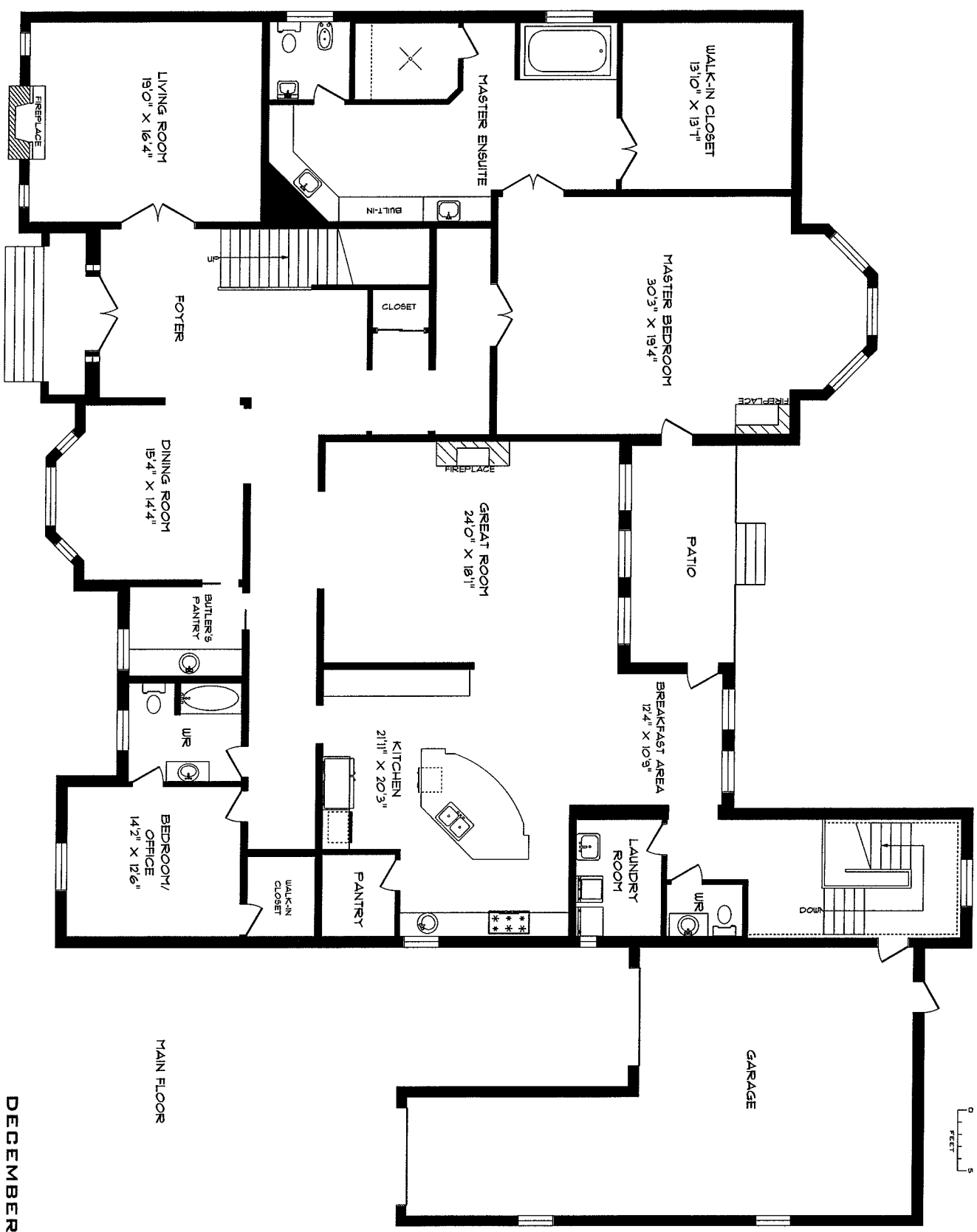
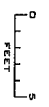


# 721 SIR RICHARD'S ROAD



MAIN FLOOR

**PLANIT**  
INCORPORATED

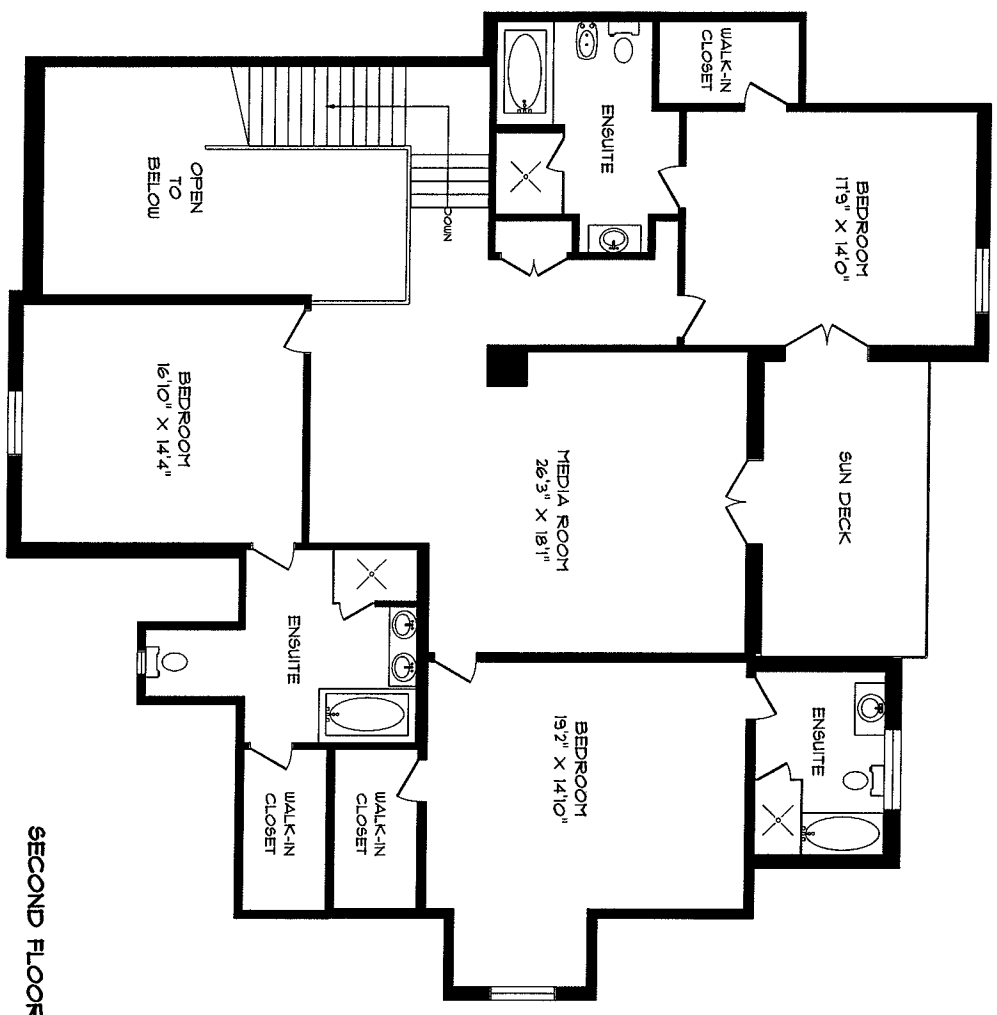
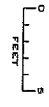
PHONE 905-271-7010  
FAX 905-271-4468  
PLANS@PLANITMEASURING.COM

DECEMBER 2009

ROOM SIZES SHOULD BE CONSIDERED APPROXIMATE  
SINCE MEASUREMENTS ARE SUBJECT TO CERTIFICATION,  
E & DE.

© 2009 PLANIT MEASURING

721 SIR RICHARD'S ROAD



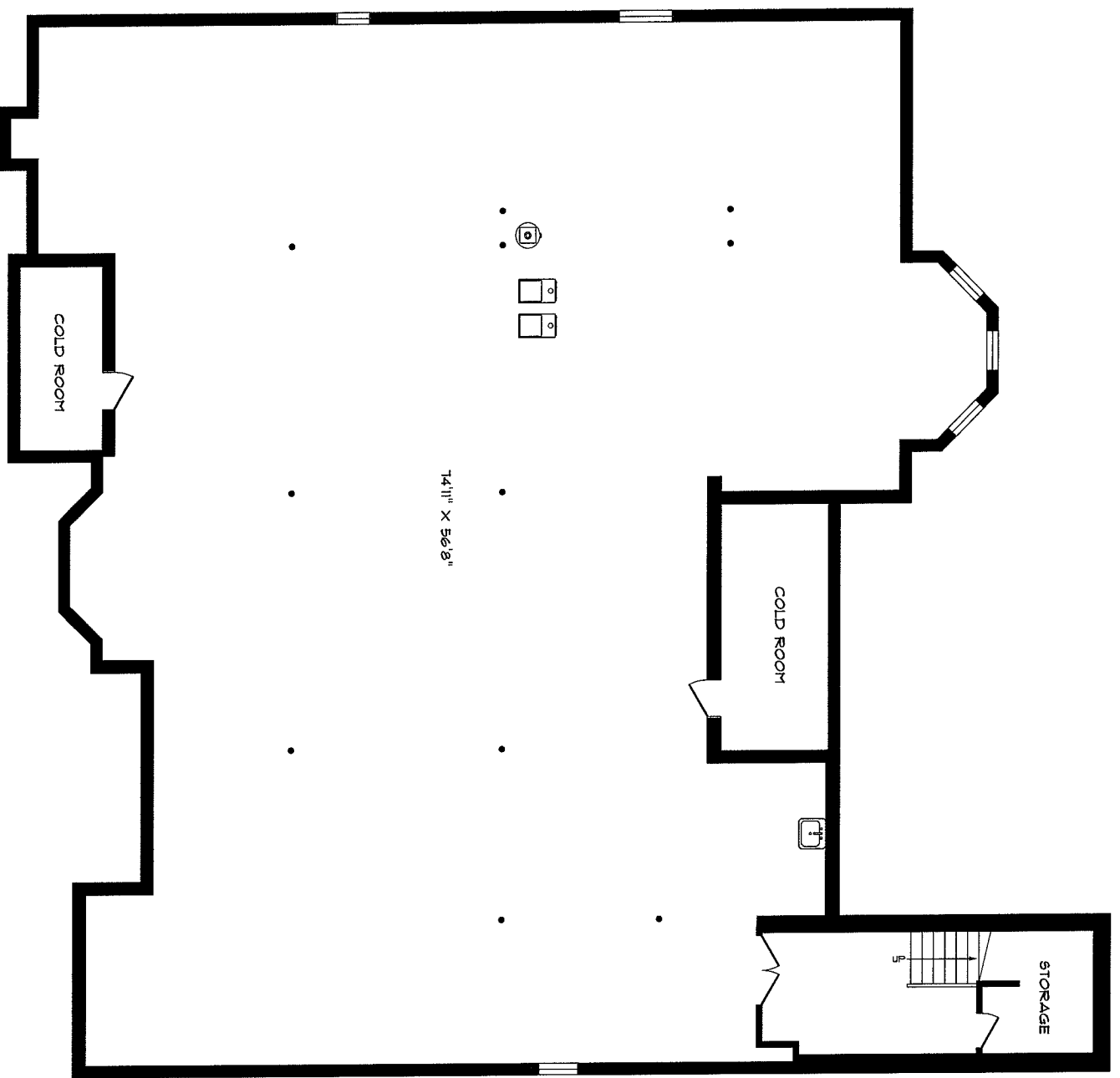
SECOND FLOOR



PHONE 905-271-7010  
FAX 905-271-4468  
PLANS@PLANITMEASURING.COM

DECEMBER 2009  
ROOM SIZES SHOULD BE CONSIDERED APPROXIMATE  
SINCE MEASUREMENTS ARE SUBJECT TO CERTIFICATION,  
E & OE.  
© 2009 PLANIT MEASURING

# 721 SIR RICHARD'S ROAD



14'11" X 56'8"

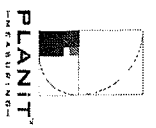
COLD ROOM

COLD ROOM

STORAGE

UP

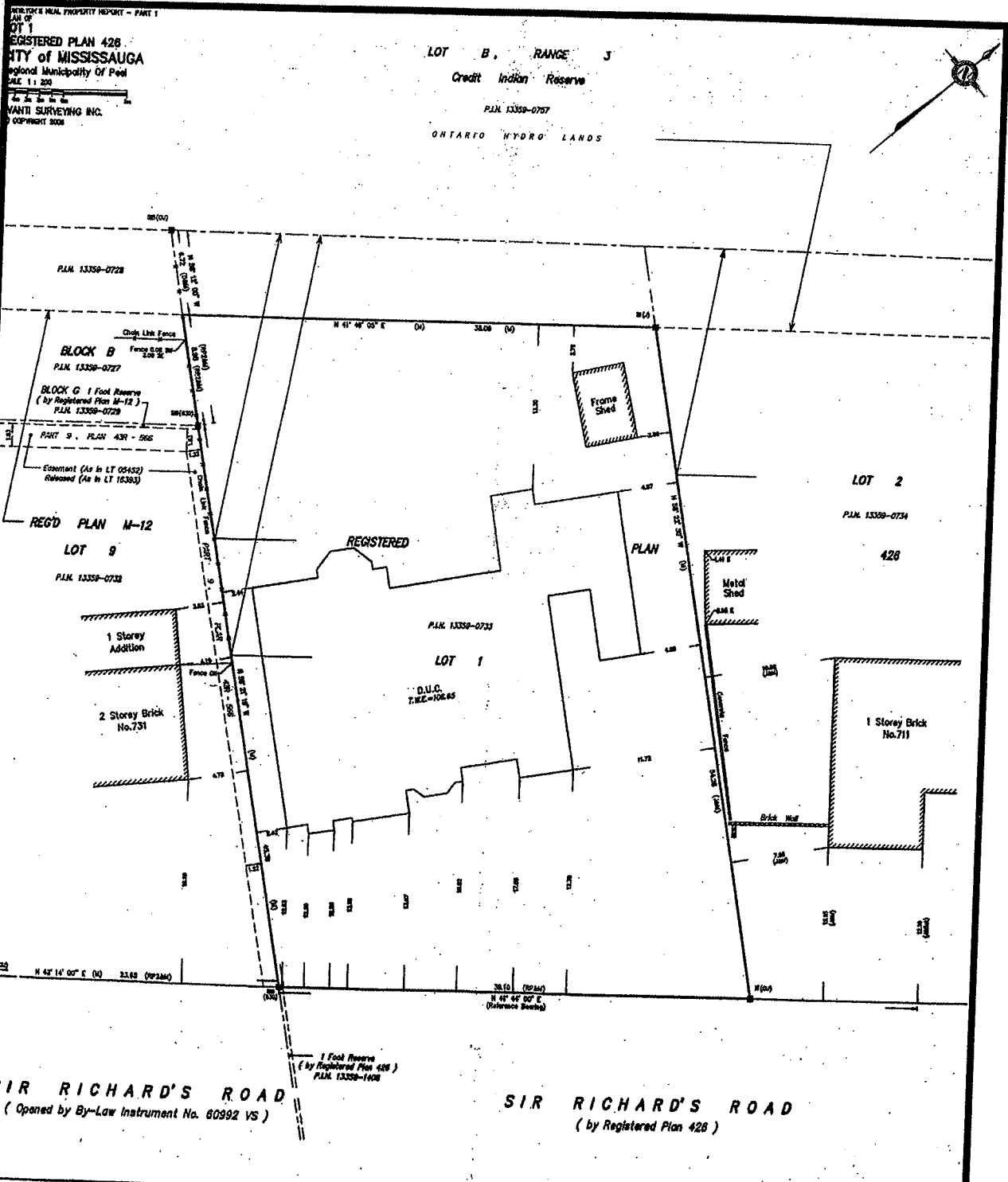
LOWER LEVEL



PHONE 905-271-7010  
FAX 905-271-4468  
PLANS@PLANITMEASURING.COM

DECEMBER 2009  
ROOM SIZES SHOULD BE CONSIDERED APPROXIMATE.  
SINCE MEASUREMENTS ARE SUBJECT TO CERTIFICATION,  
E. & O.E.  
© 2009 PLANIT MEASURING

# Survey



**AVANTI SURVEYING INC.**  
 1000 SHEPPARD AVENUE EAST  
 SUITE 100  
 SCARBOROUGH, ONTARIO M1S 1T5  
 TEL: (416) 291-1170  
 FAX: (416) 291-1171  
 www.avantisurveying.com

**ASSOCIATION OF ONTARIO LAND SURVEYORS**  
 PLAN SUBMITTED FROM  
**1625611**

THIS PLAN IS VALID ONLY IF IT IS REGISTERED BY THE SURVEYOR IN ACCORDANCE WITH THE REGULATION ON PROFESSIONAL CONDUCT, 2004, CHAPTER 1240

**LEGEND**

□	DITCH	—	SURVEY MONUMENT SET
○	WELL	—	SURVEY MONUMENT FOUND
△	WATER	—	EXISTING PLAN 428
■	ROAD	—	EXISTING PLAN 428
▨	RAILROAD	—	EXISTING PLAN 428
▧	RAILROAD	—	EXISTING PLAN 428
▩	RAILROAD	—	EXISTING PLAN 428
▪	RAILROAD	—	EXISTING PLAN 428
▫	RAILROAD	—	EXISTING PLAN 428
▬	RAILROAD	—	EXISTING PLAN 428
▭	RAILROAD	—	EXISTING PLAN 428
▮	RAILROAD	—	EXISTING PLAN 428
▯	RAILROAD	—	EXISTING PLAN 428
▰	RAILROAD	—	EXISTING PLAN 428
▱	RAILROAD	—	EXISTING PLAN 428
▲	RAILROAD	—	EXISTING PLAN 428
△	RAILROAD	—	EXISTING PLAN 428
▴	RAILROAD	—	EXISTING PLAN 428
▵	RAILROAD	—	EXISTING PLAN 428
▾	RAILROAD	—	EXISTING PLAN 428
▿	RAILROAD	—	EXISTING PLAN 428
◀	RAILROAD	—	EXISTING PLAN 428
▶	RAILROAD	—	EXISTING PLAN 428
◁	RAILROAD	—	EXISTING PLAN 428
▷	RAILROAD	—	EXISTING PLAN 428
◂	RAILROAD	—	EXISTING PLAN 428
◃	RAILROAD	—	EXISTING PLAN 428
◄	RAILROAD	—	EXISTING PLAN 428
◅	RAILROAD	—	EXISTING PLAN 428
◆	RAILROAD	—	EXISTING PLAN 428
◇	RAILROAD	—	EXISTING PLAN 428
◈	RAILROAD	—	EXISTING PLAN 428
◉	RAILROAD	—	EXISTING PLAN 428
◊	RAILROAD	—	EXISTING PLAN 428
◌	RAILROAD	—	EXISTING PLAN 428
◍	RAILROAD	—	EXISTING PLAN 428
◎	RAILROAD	—	EXISTING PLAN 428
●	RAILROAD	—	EXISTING PLAN 428
◐	RAILROAD	—	EXISTING PLAN 428
◑	RAILROAD	—	EXISTING PLAN 428
◒	RAILROAD	—	EXISTING PLAN 428
◓	RAILROAD	—	EXISTING PLAN 428
◔	RAILROAD	—	EXISTING PLAN 428
◕	RAILROAD	—	EXISTING PLAN 428
◖	RAILROAD	—	EXISTING PLAN 428
◗	RAILROAD	—	EXISTING PLAN 428
◘	RAILROAD	—	EXISTING PLAN 428
◙	RAILROAD	—	EXISTING PLAN 428
◚	RAILROAD	—	EXISTING PLAN 428
◛	RAILROAD	—	EXISTING PLAN 428
◜	RAILROAD	—	EXISTING PLAN 428
◝	RAILROAD	—	EXISTING PLAN 428
◞	RAILROAD	—	EXISTING PLAN 428
◟	RAILROAD	—	EXISTING PLAN 428
◠	RAILROAD	—	EXISTING PLAN 428
◡	RAILROAD	—	EXISTING PLAN 428
◢	RAILROAD	—	EXISTING PLAN 428
◣	RAILROAD	—	EXISTING PLAN 428
◤	RAILROAD	—	EXISTING PLAN 428
◥	RAILROAD	—	EXISTING PLAN 428
◦	RAILROAD	—	EXISTING PLAN 428
◧	RAILROAD	—	EXISTING PLAN 428
◨	RAILROAD	—	EXISTING PLAN 428
◩	RAILROAD	—	EXISTING PLAN 428
◪	RAILROAD	—	EXISTING PLAN 428
◫	RAILROAD	—	EXISTING PLAN 428
◬	RAILROAD	—	EXISTING PLAN 428
◭	RAILROAD	—	EXISTING PLAN 428
◮	RAILROAD	—	EXISTING PLAN 428
◯	RAILROAD	—	EXISTING PLAN 428
◰	RAILROAD	—	EXISTING PLAN 428
◱	RAILROAD	—	EXISTING PLAN 428
◲	RAILROAD	—	EXISTING PLAN 428
◳	RAILROAD	—	EXISTING PLAN 428
◴	RAILROAD	—	EXISTING PLAN 428
◵	RAILROAD	—	EXISTING PLAN 428
◶	RAILROAD	—	EXISTING PLAN 428
◷	RAILROAD	—	EXISTING PLAN 428
◸	RAILROAD	—	EXISTING PLAN 428
◹	RAILROAD	—	EXISTING PLAN 428
◺	RAILROAD	—	EXISTING PLAN 428
◻	RAILROAD	—	EXISTING PLAN 428
◼	RAILROAD	—	EXISTING PLAN 428
◽	RAILROAD	—	EXISTING PLAN 428
◾	RAILROAD	—	EXISTING PLAN 428
◿	RAILROAD	—	EXISTING PLAN 428
◾	RAILROAD	—	EXISTING PLAN 428
◽	RAILROAD	—	EXISTING PLAN 428
◼	RAILROAD	—	EXISTING PLAN 428
◻	RAILROAD	—	EXISTING PLAN 428

**BEARING NOTE**  
 BEARINGS ARE GIVEN IN DEGREES AND ARE REFERRED TO THE NORTH NEAREST LINE OF SIR RICHARD'S ROAD, HAVING A BEARING OF 117°00'00" ACCORDING TO REGISTERED PLAN 428.

**ELEVATION NOTE**  
 ELEVATIONS ARE GIVEN IN METERS AND ARE REFERRED TO THE CITY OF MISSISSAUGA BENCH MARK NO. 100 WHICH HAS A KNOWN ELEVATION OF 100.00 METERS.

**THIS PLAN WAS PREPARED FOR SOLE & SEPARATE USE**

**PART 2 - SURVEY REPORT**

1) PLAN NOTE LOCATIONS OF POINTS

2) REGISTERED CHANGES AND/OR PROVISIONS ONLY 1:10

3) THIS PLAN DOES NOT CONVEY COMPLIANCE WITH SECTION 37(1) OF THE REGULATION

**Avanti**  
 SURVEYING INC.  
 340 WARDEN AVENUE, SUITE 100, SCARBOROUGH, ONTARIO  
 M1S 1T5 (416) 291-1170 - FAX: (416) 291-1171  
 www.avantisurveying.com

DATE OF SURVEY: 2008  
 SURVEYOR: [Signature]  
 CIVIL ENGINEER  
 ONTARIO LAND SURVEYOR